



Global Mapper Empowers Data-Driven Golf Course Management from the Ground Up

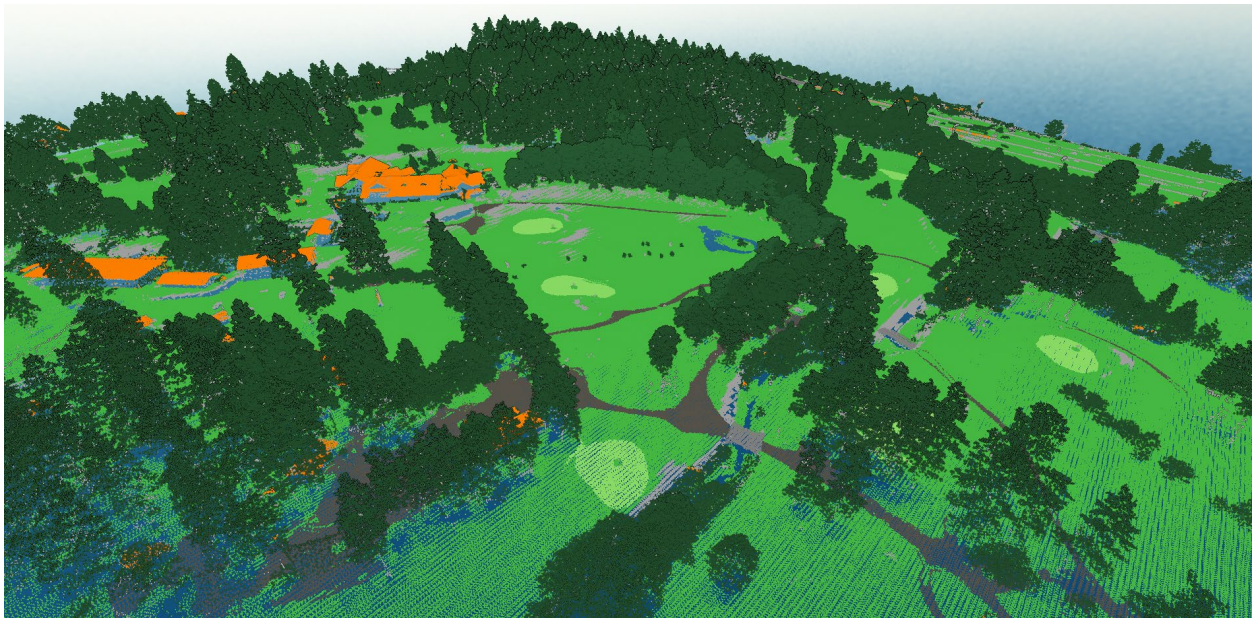
Hallowell, ME — January 2026 — From drainage challenges to daily maintenance planning, today's golf course superintendents are increasingly relying on data to guide decision-making and planning throughout the course. Subtle elevation changes, drainage patterns, and surface conditions can have a significant impact on turf health and playability. At the 2026 GCSAA Conference and Trade Show, Blue Marble Geographics will highlight how Global Mapper® helps course managers turn terrain models, lidar, aerial imagery, and field-collected data into actionable insights without requiring specialized GIS expertise.

Using elevation models and terrain analysis tools, superintendents can visualize slopes, identify low-lying or problem areas, and better understand elevation changes by creating contours. Watershed analysis tools further reveal how surface water moves throughout the course, supporting more informed decisions related to drainage planning, irrigation efficiency, and long-term maintenance strategies.

For courses leveraging lidar data, Global Mapper offers advanced point cloud processing capabilities for surface modeling, vegetation analysis, and feature classification. Its point cloud sub-classification tools provide a unique solution for golf course applications, allowing users to isolate, visualize, and extract cart paths, bunkers, and other hardscape features that are often difficult to capture using traditional mapping workflows. This detailed surface insight supports renovation planning, asset management, and clearer communication with stakeholders.

Global Mapper also simplifies field data collection and collaboration. Maintenance teams can collect GPS points, lines, and areas in the field and quickly bring that data back into a single, visual environment for analysis and planning. This streamlined workflow reduces guesswork, improves communication between crews and managers, and helps maintain accurate records for ongoing maintenance and long-term planning.

Blue Marble Geographics is excited to demonstrate how Global Mapper offers golf course professionals a practical and efficient way to leverage spatial data, helping them make confident decisions from the ground up at GCSAA 2026.



About Blue Marble Geographics

Blue Marble Geographics develops Global Mapper, a user-friendly geospatial software solution trusted worldwide for terrain analysis, point cloud processing, data visualization, and field data workflows. For over 30 years, Blue Marble's products have supported professionals across industries, including golf course management, surveying, environmental analysis, and engineering.

For more information, visit www.bluemarblegeo.com.

Contact Us: sales@bluemarblegeo.com

Visit Us at GCSAA 2026: Booth #3131